

MHPC

10/100 BASE-T 1-PORT TRANSFORMER MODULES

Data sheet#:
M3066ANL
Page
1 of 4

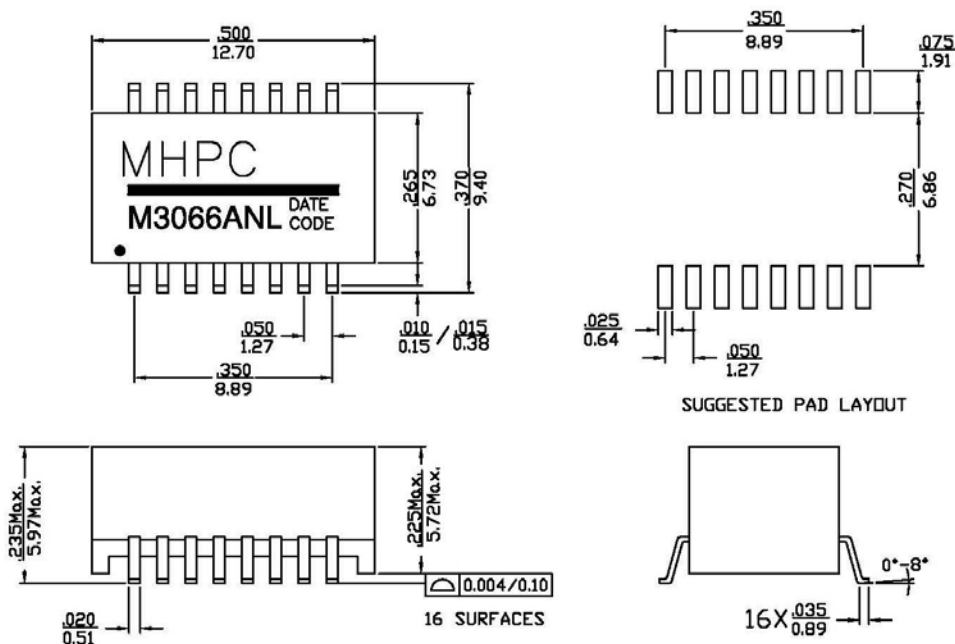


- Meet IEEE 802.3u and ANSI X3.263 standards, with 350 μ H OCL at 8 mA DC bias
- Designed for reflow soldering at temperatures up to 260°C
- Small package for use in the most space-restrictive applications
- Compliant with “RoHS” standard

Electrical Specifications @ 25°C---Operating Temperatur 0°C to 70°C

Part Number	Turn Ratio ($\pm 5\%$)	Insertion Loss (dB MAX)	Return Loss (dB Min @100 OHMS)				Crosstalk (dB Min.)			Differential to ComonMode Rejection (dB Min.)		Hipot (Vrms Min.)
			1-30 MHz	40 MHz	50 MHz	60-80 MHz	1MHz-30MHz	30MHz-50MHz	50MHz-100MHz	1-60MHz	60-100MHz	
M3066ANL	1CT:1CT	-1.1	-16	-14	-13	-10	-50	-40	-33	-38	-30	1500

Mechanical



Dimensions: Inches/mm
Unless otherwise specified, all tolerances are ± 0.004

MHPC

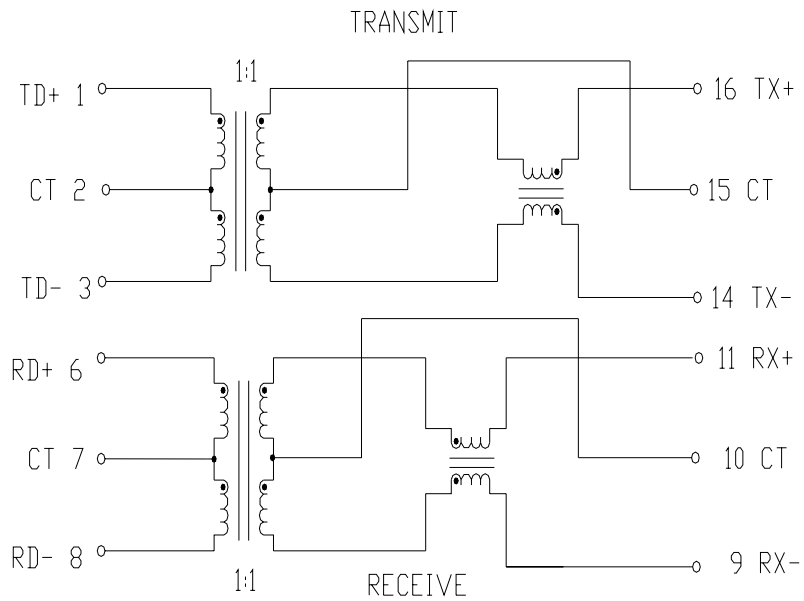
10/100 BASE-T 1-PORT TRANSFORMER MODULES

Data sheet#:

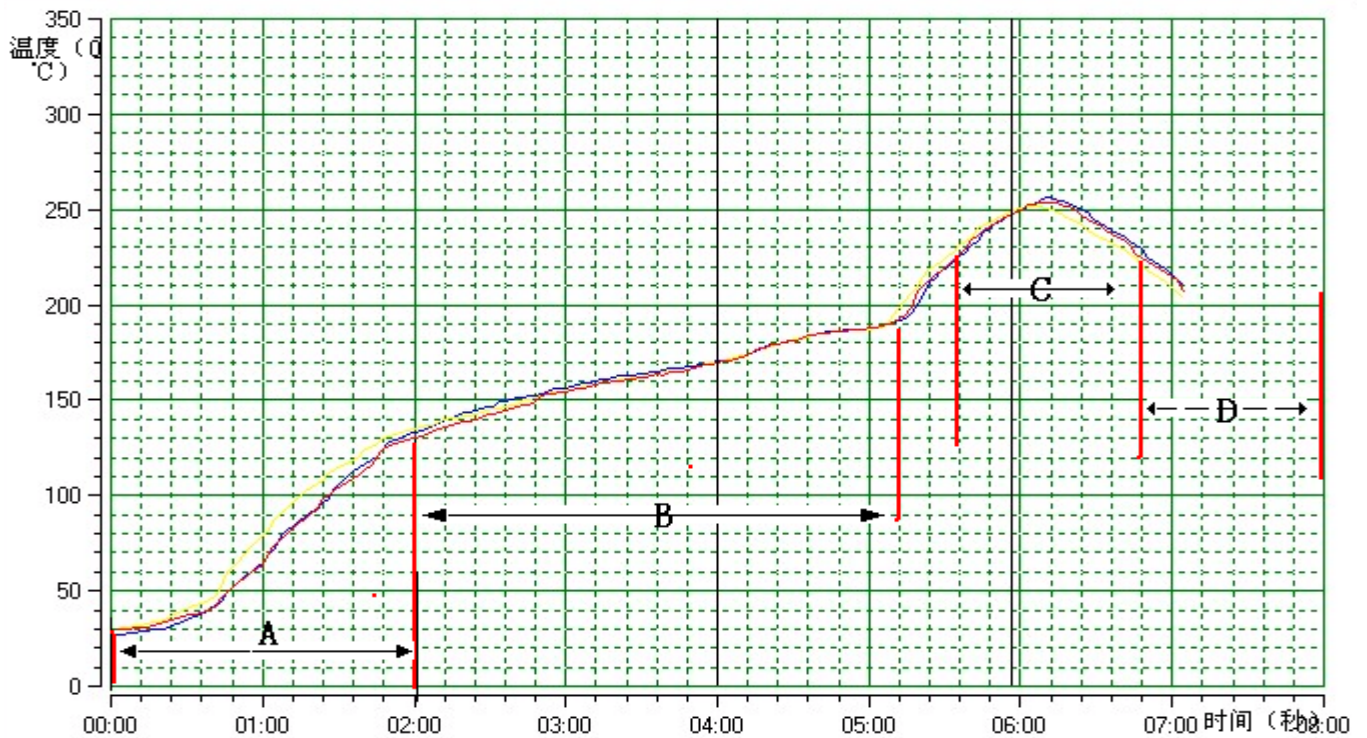
M3066ANL

Page
2 of 4

Schematics



The welding temperature curve:



A、Preheating zone:	Maximum temperature rise: 1.0~3.0 degrees / S
B、Infiltration zone:	TEMP: 130~180°C
	Time: 60~180S
C、Recirculation zone :	Maximum temperature rise time: < 2S
	Maximum temperature: 245 ~260 degrees
D、Cooling zone :	Time: 225 degrees Celsius (melting point) more than 50~80 seconds;
	Temperature drop: < 3 degrees / S

Note: the above curves are for reference only. The actual setting needs to be combined with the characteristics of the product, the distribution of components, equipment and other factors.

<h1>MHPC</h1>	10/100 BASE-T 1-PORT TRANSFORMER MODULES	Data sheet#:
		M3066ANL
		Page 4 of 4

Package Specification

1. Weight :

A: Weight per transformer:0.0009Kg

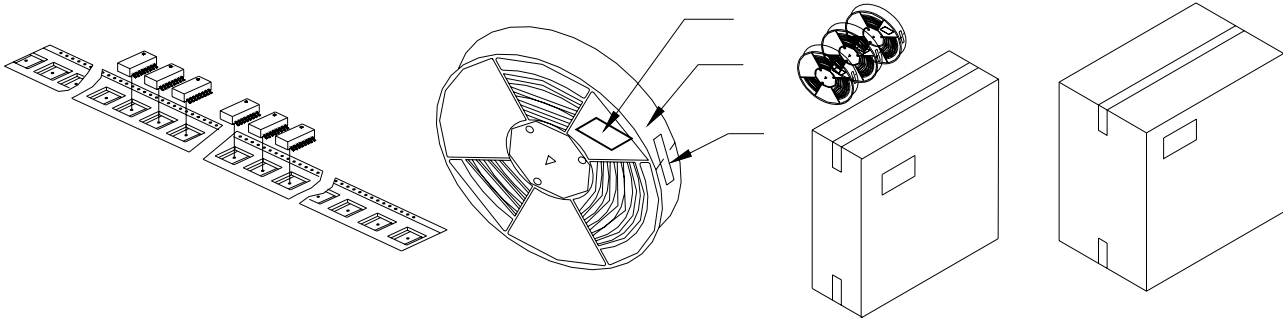
B:Net weight per Reel with transformer:0.71Kg

C:Total weight per carton: 8.14Kg

2. Package Material List :

141-007-1	Cover tape: 21.3mm	Length of about 7800mm
141-001-2	Carrier tape: 12x24mm (Products distance x Carrier tape width)	Length of about 8000mm
148-001	Rubber packing Reel:13x24mm	6PCS/Carton
144-004-1	Small carton: L×W×H:34.5×34.5×7CM	2PCS/Carton
144-004-2	large carton: L×W×H:36×36×29CM	1PCS
145-001	Thick paper: L×W: 34×34CM	2/Carton

3. Package Diagram :



4. packaging requirements :

- 1) With at least 14 empty plastic case and lattice.
- 2) Stick the correct shipping label on rubber packing/small carton/large carton.
 - A. Shipping label has at least customer product name, cycle, quantity, etc..
 - B. Each wheel only load up to 2 production Date Code of the products(The period of production Date Code is continuous.) .
 - C. Each carton can only be fitted with the same type of products.
 - D. Production printing direction should be same.
- 3) 600pcs/Reel, 3Reels/small carton, 1800pcs/small carton, 2 small carton/large carton, 3600pcs/large carton.